

What is a MAC Address?

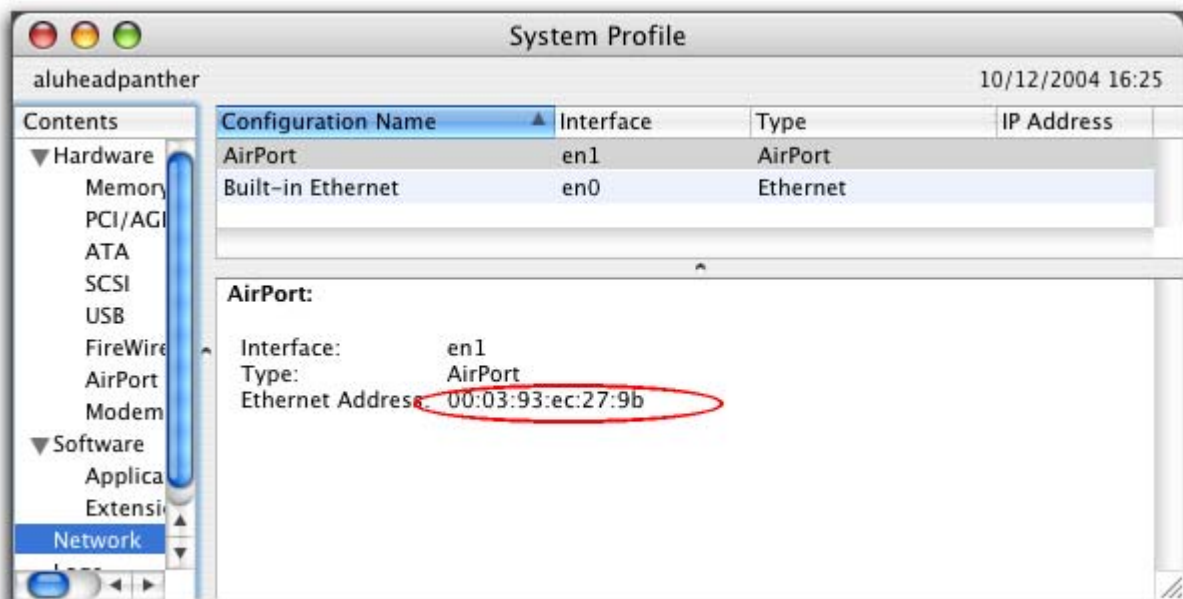
MAC stands for Media Access Controller, and is a fancy name for a network card's hardware address. This address is assigned to every network card by the manufacturer and is a unique number written in hexadecimal that consists of 12 digits written in pairs. The number will appear generally in the format of XX-XX-XX-XX-XX-XX using the numbers 0-9 and the letters A-F. If you are using a removable network adapter, the number will usually be printed on the back. If you cannot find it on the back, be sure the removable adapter is inserted into your computer and active before following the specific instructions for your operating system.

MacOS X 10.3.x (Panther)

The easiest way to find your MAC address is to open the System Profiler. You can find this in the Utilities folder or by clicking on the Apple menu, and selecting "About this Mac". In the window that opens click the button labeled "More Info...". Next, click on Network in the Contents column. This will then expand the section that shows all your current network devices and configurations.

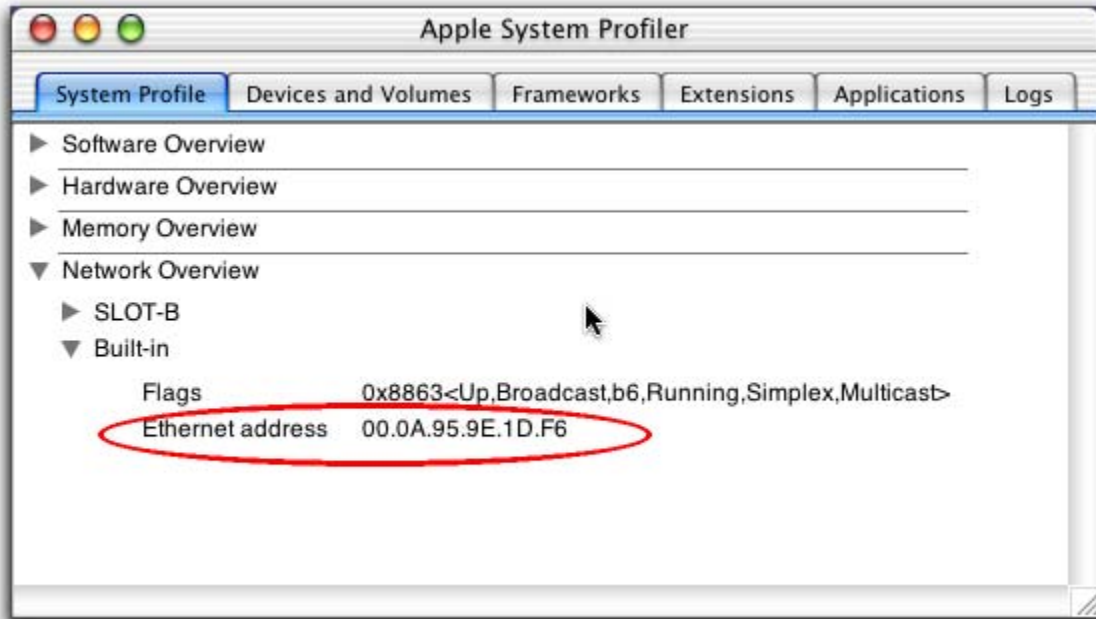
Ethernet Address:

Be sure you have highlighted the Interface labeled AirPort (usually en1).



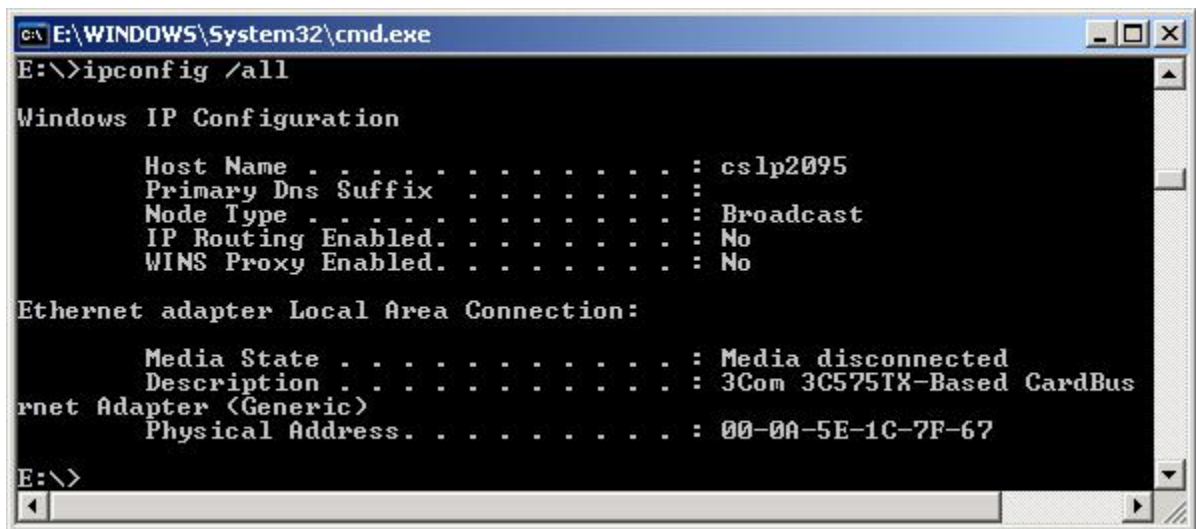
MacOS X 10.2.x (Jaguar)

The easiest way to find your MAC address is to open the System Profiler. You can find this in the Utilities folder or by clicking on the Apple menu, and selecting "About this Mac". In the window that opens click the button labeled "More Info...". The Apple System Profiler should open. Click on the triangle to expand the Network Overview section. It should open and look like the image below. The MAC address (Ethernet Address) is highlighted in red. Once again, you will want to make sure you find the Airport address not the Built-in address.



Windows XP

- If your network adapter is not an internal one and does not have any sort of label depicting the MAC Address assignment then insert your adapter into the machine
- Click on **Start** and then **Run...** enter **cmd** in the input box and click **OK** to obtain a command prompt
- Type **ipconfig /all** and press the [ENTER] key



```
C:\E:\WINDOWS\System32\cmd.exe
E:\>ipconfig /all

Windows IP Configuration

    Host Name . . . . . : cslp2095
    Primary Dns Suffix . . . . . :
    Node Type . . . . . : Broadcast
    IP Routing Enabled. . . . . : No
    WINS Proxy Enabled. . . . . : No

Ethernet adapter Local Area Connection:

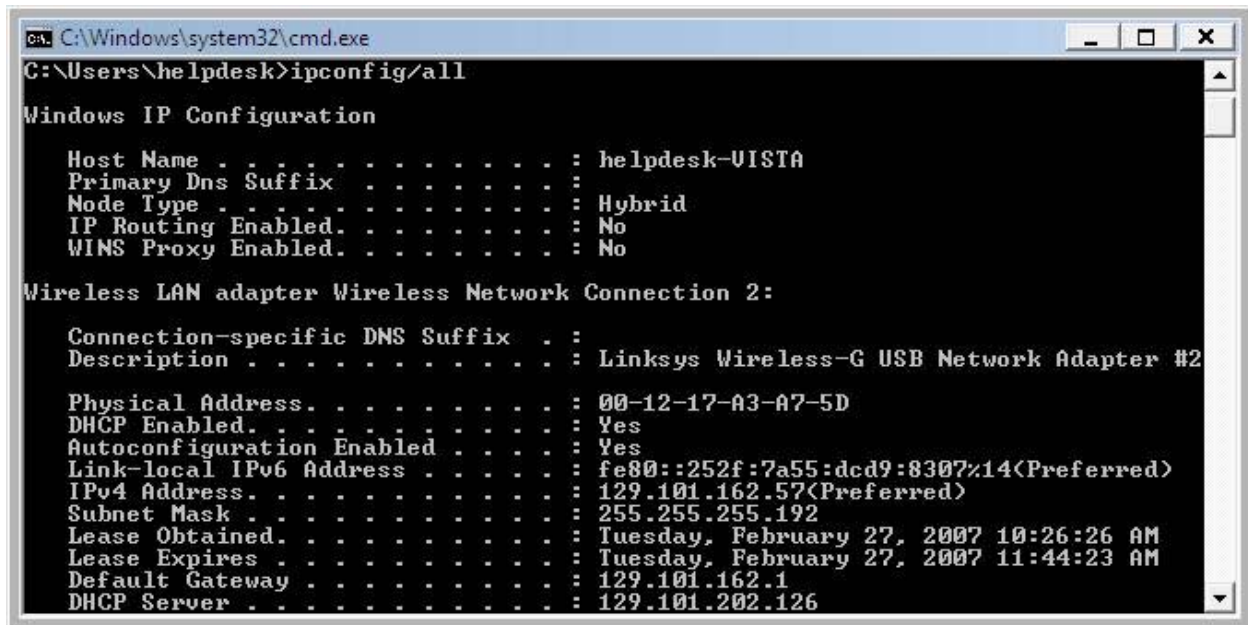
    Media State . . . . . : Media disconnected
    Description . . . . . : 3Com 3C575TX-Based CardBus
    Network Adapter (Generic)
    Physical Address. . . . . : 00-0A-5E-1C-7F-67

E:\>
```

You will find your MAC Address beside the Physical Address entry under the appropriate connection heading. PLEASE make sure you are looking at the Physical Address under the **WIRELESS** heading, as providing the non-wireless connection will prevent you from connecting to the wireless network. Generally the heading will appear as “Ethernet adapter Wireless Network Connection”.

Windows Vista

- If your network adapter is not an internal one and does not have any sort of label depicting the MAC Address assignment then insert your adapter into the machine
- Click on **Start** and in the **Search** box type **cmd** and press enter to obtain a command prompt.
- Type **ipconfig /all** and press the [ENTER] key



```
C:\Windows\system32\cmd.exe
C:\Users\helpdesk>ipconfig/all

Windows IP Configuration

Host Name . . . . . : helpdesk-U1STA
Primary Dns Suffix . . . . . :
Node Type . . . . . : Hybrid
IP Routing Enabled. . . . . : No
WINS Proxy Enabled. . . . . : No

Wireless LAN adapter Wireless Network Connection 2:

Connection-specific DNS Suffix . . :
Description . . . . . : Linksys Wireless-G USB Network Adapter #2

Physical Address. . . . . : 00-12-17-A3-A7-5D
DHCP Enabled. . . . . : Yes
Autoconfiguration Enabled . . . . : Yes
Link-local IPv6 Address . . . . . : fe80::252f:7a55:dcd9:8307%14(Preferred)
IPv4 Address. . . . . : 129.101.162.57(Preferred)
Subnet Mask . . . . . : 255.255.255.192
Lease Obtained. . . . . : Tuesday, February 27, 2007 10:26:26 AM
Lease Expires . . . . . : Tuesday, February 27, 2007 11:44:23 AM
Default Gateway . . . . . : 129.101.162.1
DHCP Server . . . . . : 129.101.202.126
```

You will find your MAC Address beside the Physical Address entry under the appropriate connection heading. PLEASE make sure you are looking at the Physical Address under the **WIRELESS** heading, as providing the non-wireless connection will prevent you from connecting to the wireless network. Generally the heading will appear as “Wireless LAN adapter Wireless Network Connection”.